



## 2016– The Lunar Year of the Monkey

Each year the Renascentia Hall staff invites host families and partner school staff to a special appreciation dinner in thanks for welcoming our international our students. Students are also honored for their successes. The event normally coincides with the Chinese New Year, a special time of celebration in that country. Chinese New Year celebrations traditionally run from Chinese New Year's Eve, the last day of the last month of the Chinese calendar until the Lantern Festival on the 15th day of the first month, making this festival the longest one in the Chinese calendar.



For 2016, Chinese New Year begins on Monday, February 8 and it is the Year of The Monkey. Since the Chinese calendar is based on the phase

of the moon and the time of the solar year, the Chinese New Year is often referred to as the "Lunar New Year". Within China, regional customs and traditions concerning the celebration of the Chinese New Year vary widely.



Often, the evening preceding the day is an occasion for Chinese families to gather for the annual reunion dinner. It is also traditional for families to thoroughly cleanse the house to sweep away any ill-fortune and to make way for good incoming luck. Windows and doors will be decorated with red color paper-cut outs and couplets with popular themes of "good fortune" or "happiness", "wealth", and "longevity." Other activities include lighting firecrackers and giving money in red paper envelopes.

Tower Hill Head of School Bessie Speers invited students to celebrate the New Year with her. Other students gathered at various host homes to share a meal. Some of the gatherings are pictured here.



This year, the Annual Appreciation Dinner will take place on Friday, February 12 at 6 p.m. at the Hibachi Grill & Supreme Sushi Buffet located at 4403 Kirkwood Highway in the Kirkwood Plaza Shopping Center (near Kohl's). To prepare for the event, host families and school staff are asked to provide the number attending, including international students, to Danielle at [dlu@renashall.com](mailto:dlu@renashall.com) by February 10.



### In This Issue

- Chinese New Year.....1
- Honor Roll.....1
- SAT/ACT Prep.....1
- Important School Dates.....2
- Happy Birthday.....2
- Upcoming Events.....2
- Appreciation Dinner.....3

### Honor Roll

*Congratulations to the following students who earned Honor Roll status for the first semester at their school!*

- Sanford:** Haozhe Jacob Dong, Yuhuan Karida Liu, BeiBei Beverly Qin, Shiyun Susan Tang, Ruilin Yang
- Ursuline:** Mengyi Bella Tuo
- Tower Hill:** Siyang Sky Wu
- Salesianum:** Songheng Li
- Salesianum National Honor Society:** Yifan Jake Zhu

*Achieving Honor Roll for Term 1 at Tatnall:* Yichen Johnson Guo, Yihan Miranda Kong, Zikang Millo Ling, Jifeng Archer Zhang

### SAT/ACT Prep is Available

Back to Basics is one many companies that offers students "one-on-one" preparation for the SAT and ACT. Students can prepare for these important tests privately and with minimal distractions in this way. The one-on-one method also allows for a more personal learning experience since students can drive the tutoring session in the direction they need to take. Other companies providing this service include Huntington, Kaplan, and Sylvan.

## Important School Dates

*\*Please check your school website regularly for updates\**

- Feb. 6: Indoor Track State Championships  
Feb. 9: Mardi Gras Celebration — Aquinas  
Feb.10: Ash Wednesday  
Feb.12: No School – Annapolis, Friends' Central, Friends' Select, Independence, Red Lion, Sanford, Tatnall, Ursuline  
Feb.12, 13 & 14: Musical "Mame" — Sanford  
Feb.13: Hearts for Heroes 5K Run— St. Mark's  
Feb.14: Valentine's Day  
Feb.15: Spelling Bee — Aquinas  
Feb.15: Presidents' Day: No School — Annapolis, Friends' Central, Friends' Select, Independence, Red Lion, Salesianum, Sanford, St. Mark's, Tatnall, Ursuline, Wilmington Christian, York Catholic  
Feb.18- 20: "Tatnall Showcase"  
Feb. 25-27: Winter Musical "Cinderella" — Wilmington Christian  
Feb. 26-27: Musical "A Mid Summer Night's Dream — Friends' Central  
Feb. 26: Drama Production — Independence  
Feb. 27: Used Book Sale — Wilmington Friends  
Feb. 29: Leap Day!  
Feb. 29: Shakespeare Showcase — Friends' Central  
March 1: Spring Sports begin

## Upcoming Events

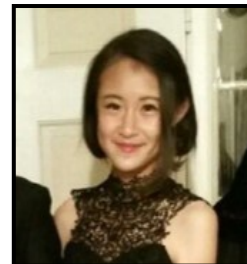
**2/12/16 – Chinese New Year Annual Appreciation Dinner—Hibachi Grill and Supreme Buffet**

**2/13/16 – CACC Chinese New Year Festival — The Independence School**

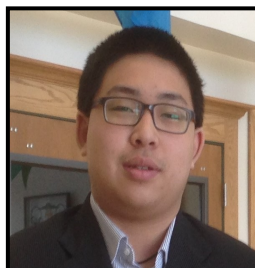
## 生日快樂 Happy Birthday!



**Jing Nancy Bi**  
February 1



**Lijin Judy Chen**  
February 2



**Shiyao Jason Ju**  
February 12



**Mingyi Joey Bai**  
February 16

**We Wish You A Happy Birthday!**

## Snow Tubing in the Poconos



Winter finally arrived in the Mid-Atlantic region and several students took advantage of it by going snow tubing at Camelback Mountain in the Poconos. On January 17, Jerry Xiao chap-

eroned the group of eager snow seekers. They were treated to fresh powder that was also falling back home. After a morning of sliding down the mountain, the students persuaded Jerry to let them try skiing and snowboarding.



## What is Leap Day?

This year's extra day is necessary because of the "messiness" of our Solar System. One Earth year, which is a complete orbit around the Sun, does not take an exact number of whole days. In fact, it takes 365.2422 days, give or take to make, the trip. Those four quarters or .2422 of a day are added together and become an extra whole day on our calendar every four years. In years gone by it was acceptable for women to propose marriage to men *only* on February 29. It's called Leap Day because, well, the dates leap over the extra day. In years with 365 days or *common years*, February 1st and March 1st will be the same day of the week but in a Leap Year, March 1st is a Tuesday, not a Monday like February 1.

# Celebrate the Year of the Monkey

## CHINESE NEW YEAR DINNER WITH RENASCENTIA HALL

### 西润学堂2016喜迎猴年晚宴邀请函



You and your family are cordially invited  
to the Annual Appreciation Dinner  
honoring all Host Families, Partner  
Schools, and International Students

我们诚邀您与您的家人于2月12日晚参加由西润学  
堂举办的新年晚宴，与住家，合作学校，西润员工  
以及国际学生们共享欢乐时光！

**Friday, February 12**  
**6:00 - 8:00 p.m.**

- ◆ **Red Envelope Lucky Money to attending students**
- ◆ **Recognition of Students who made Honor Roll**
- ◆ **Door Prizes awarded throughout the evening**

Hibachi Grill and Supreme Buffet  
4403 Kirkwood Highway  
Kirkwood Plaza Shopping Center  
Wilmington, Delaware  
302-998-1888

红包多多送学子，优秀学员赢奖励，心动抽奖且不停

Dinner is complimentary. Please RSVP by Friday, February 5  
Email: [dlu@renashall.com](mailto:dlu@renashall.com) or call: 302-273-2009

请于2月5日前回复至Email: [dlu@renashall.com](mailto:dlu@renashall.com) 或电话: 302-273-2009

